



s (Minst. of Environment) from the Kildrummy Castle Garden Trust, near Alford and Strathdon, Aberdeenshire



The Golden Elm in the Quarry, June



Kildrummy Castle Ruins from the

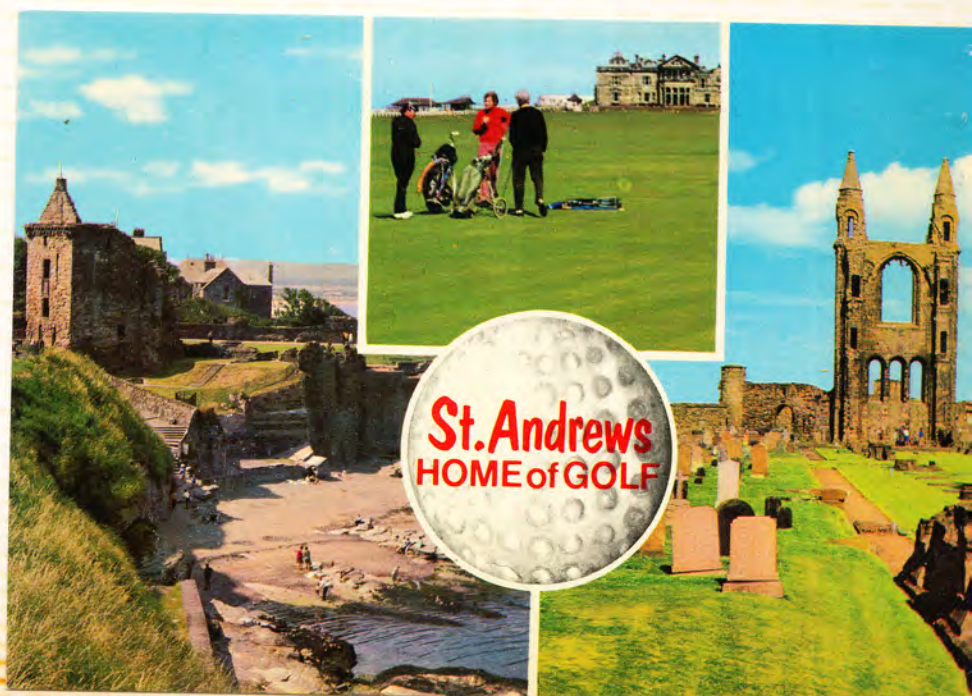
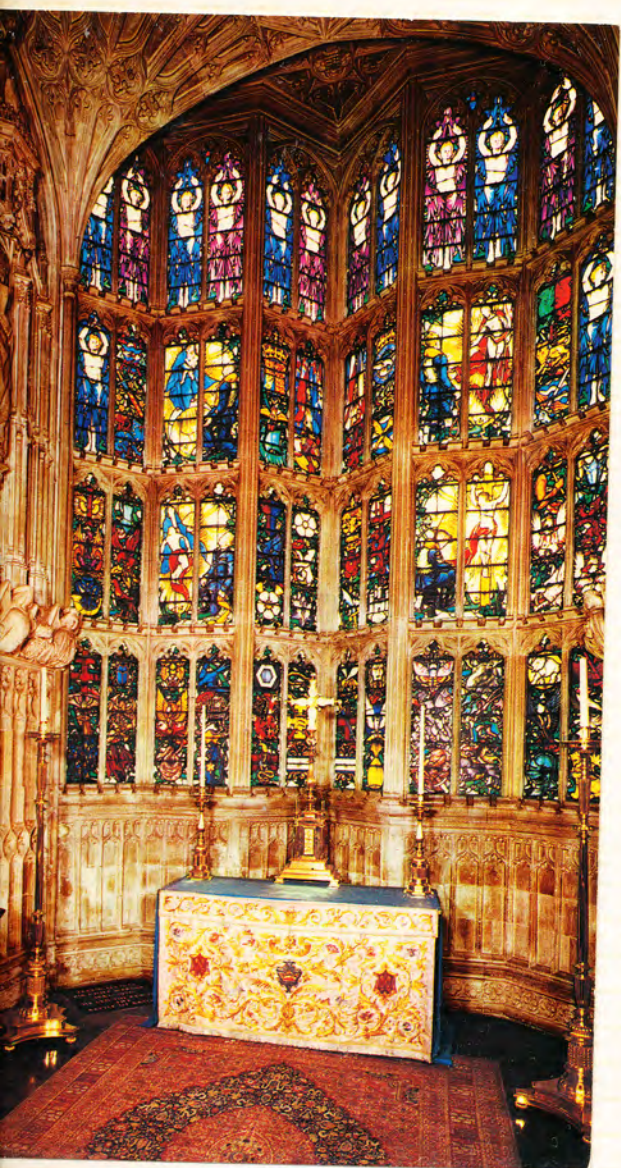


**GREETINGS FROM
ST. ANDREWS**









St. Andrews
HOME of GOLF





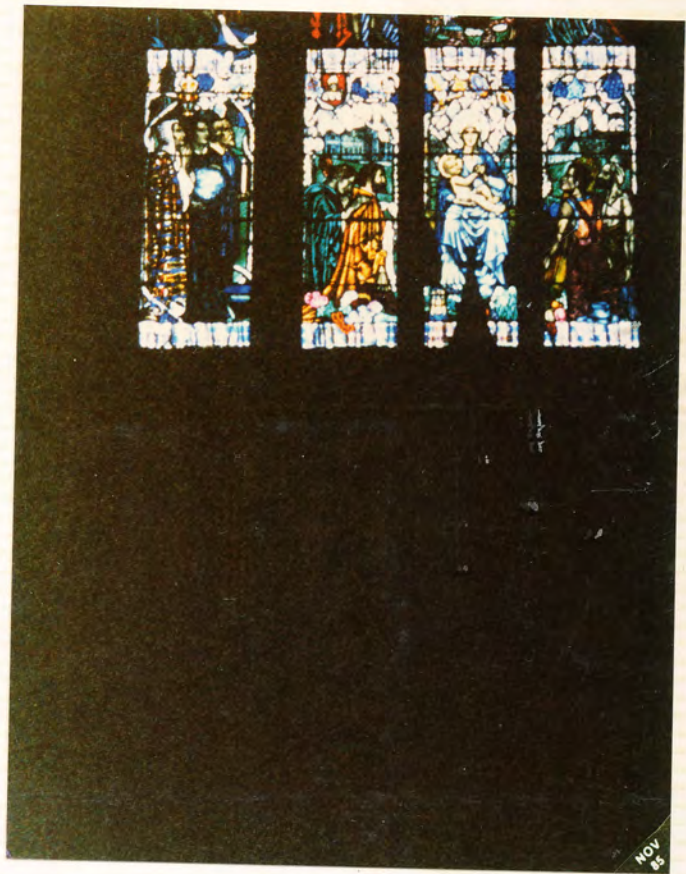
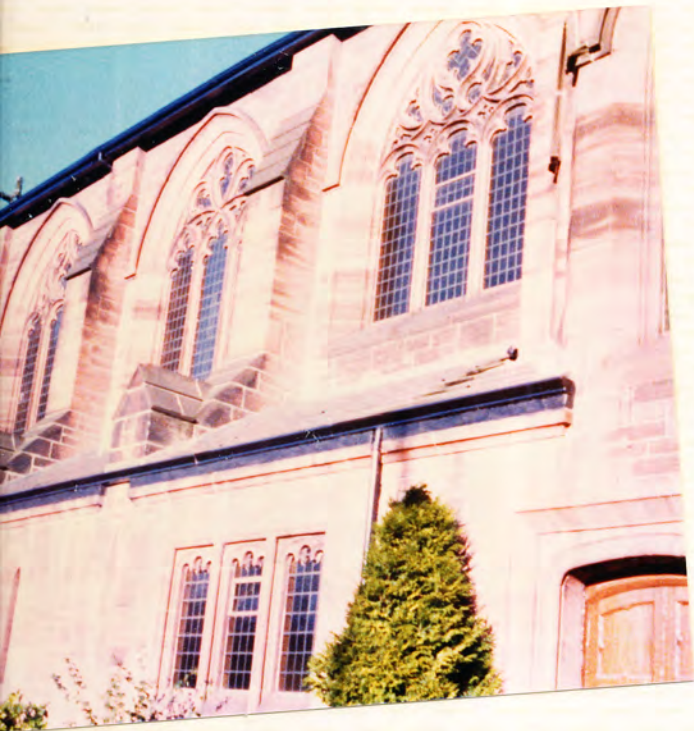






































GOODTIME II
CLEVELAND, OHIO





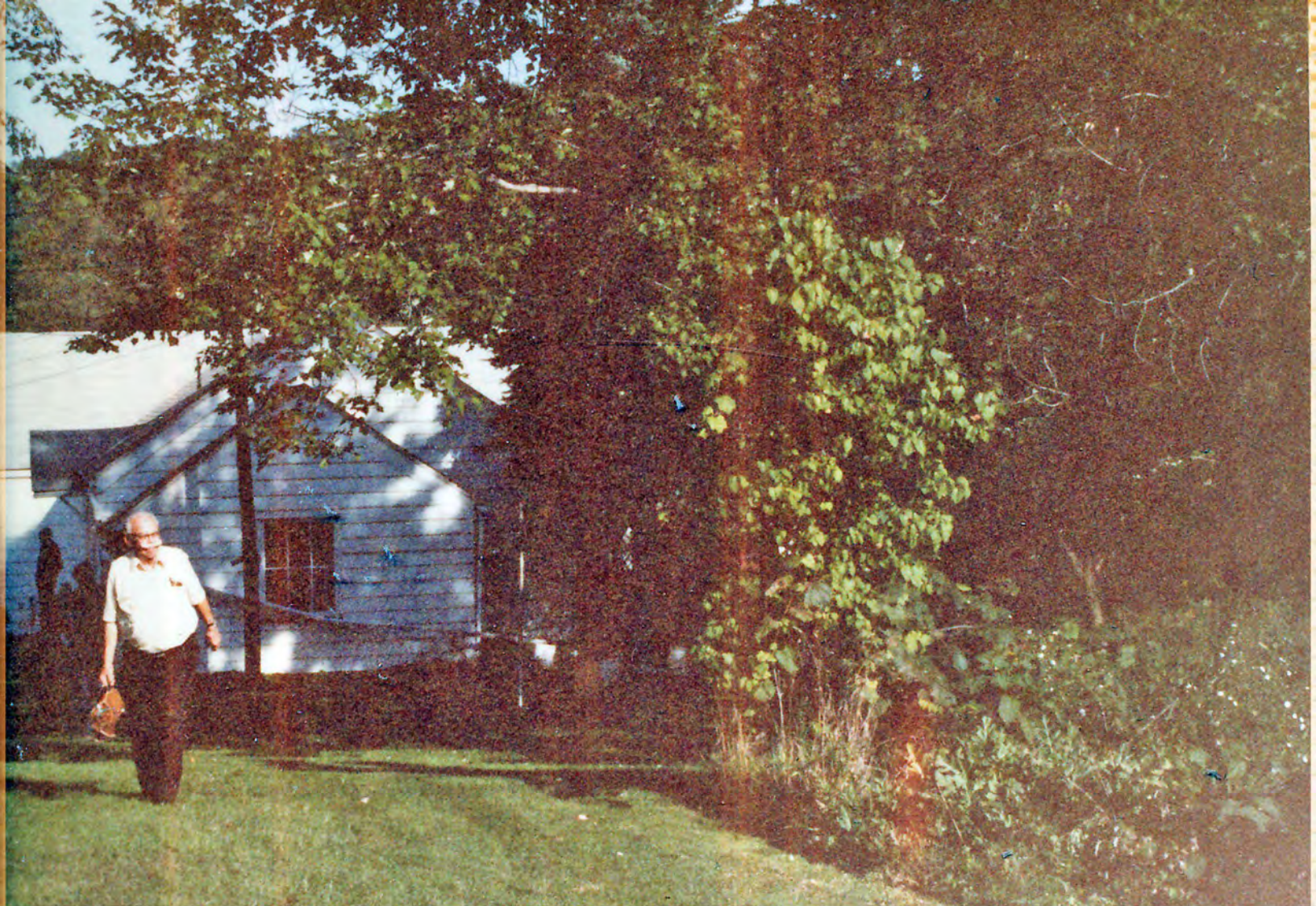














DAUGHTER
OF ADAM &
MOSER







